

when **LITTLE**  
becomes **MUCH**



**FRIENDSBAPTIST  
CHURCH**

See the Way | Know the Truth | Live the Life

# WHY?

**100 Children in  
Awana this year.**



# WHY?

**40,000 people live  
within 2 miles**



# WHY?

**We will use this  
building 5-6 days a week**



# WHY?

**With the opportunity to reach over 200 children through Upwards**



# WHY?

**Double our Wednesday  
night Awana impact  
to 200 students**



# WHY?

**Create a spiritual refuge  
for teenagers through  
sports, activities and  
God's word.**



# WHY?

**Increase our ability as  
a church to have church  
wide fellowships**





# WHY?

**Increase our worship  
space.**



**HOW**

**The Family Life  
Center will...**



# HOW

**...have the ability to  
seat 600-800 people.**



# HOW

**...have a full  
commercial kitchen  
with a walk-in cooler  
and dishwasher.**



# HOW

**...have bleachers that  
seat 240 people.**



# HOW

**...have 15,000 square feet of space.**



# HOW

**...a stage that will hold  
100 choir members.**



# HOW

**...double our restroom  
facilities.**



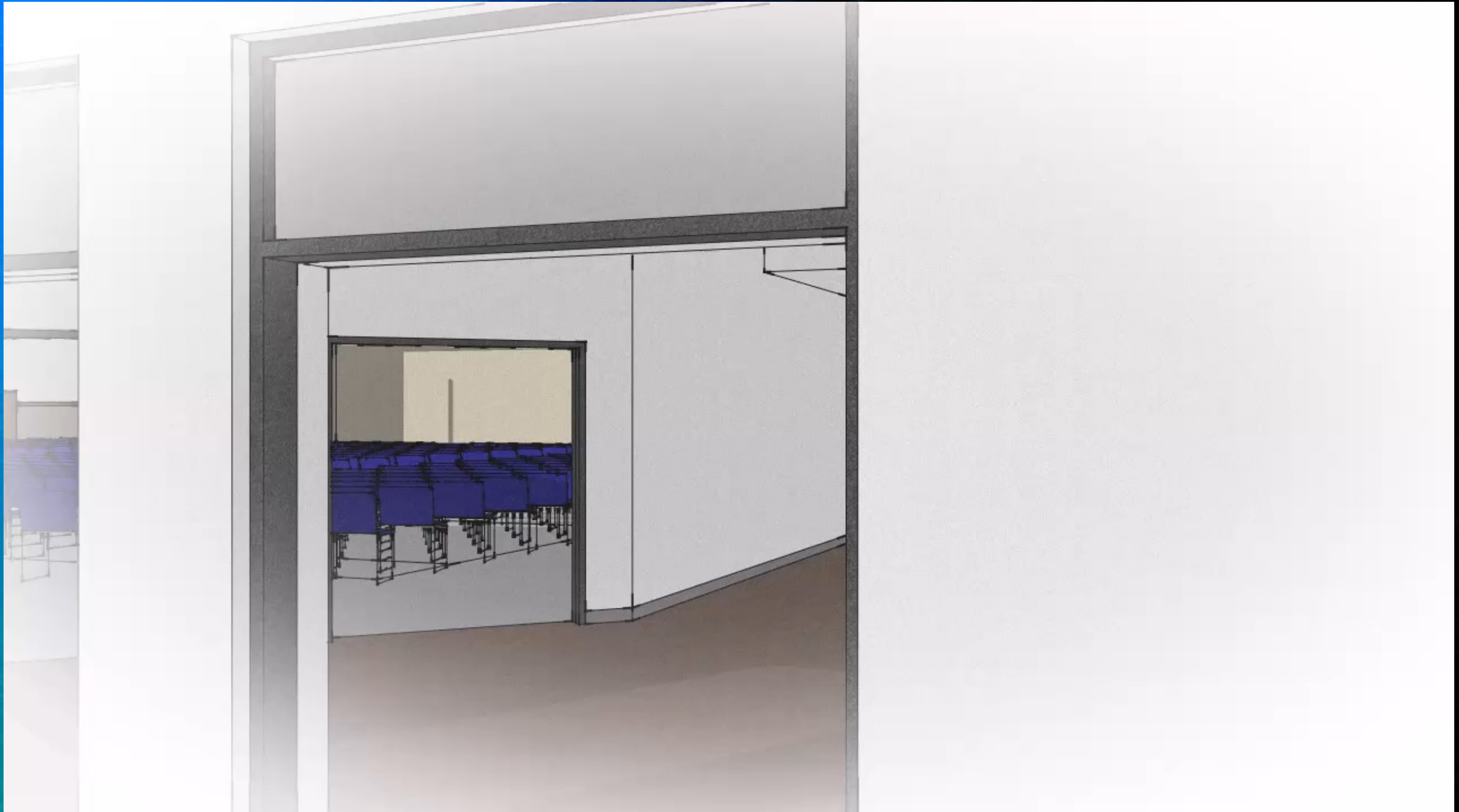


# HOW

**...bring us 80 more  
parking spaces (min).**









**Main Lobby Entrance** | Covered Walkway from Main Building



**Main Lobby Entrance** | Covered Walkway from Main Building



***Rear Lobby Entrance*** | **Handicap Accessible**



**Side View** | from existing parking lot

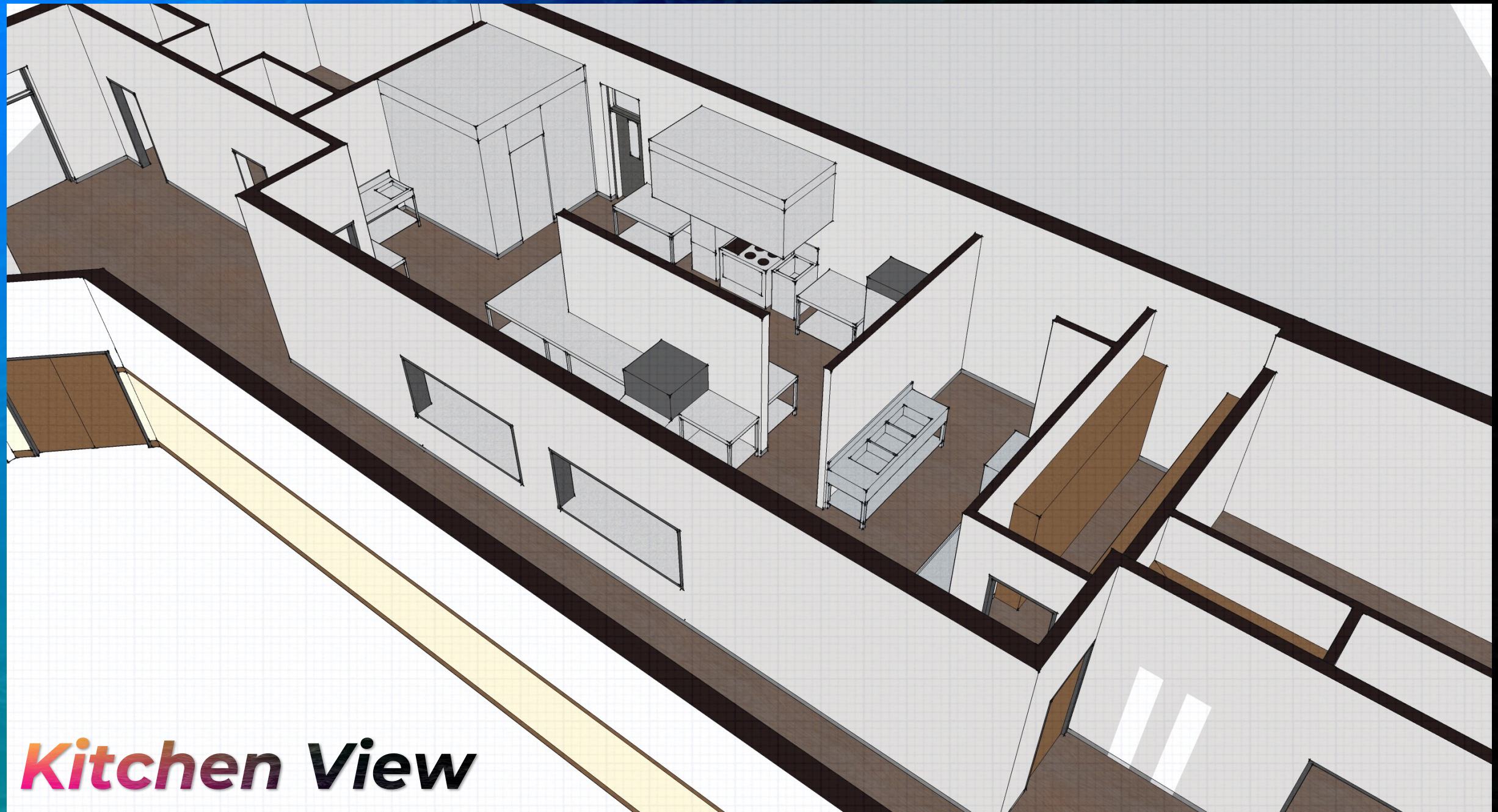


***Aerial View*** | from existing parking lot



***Aerial View***





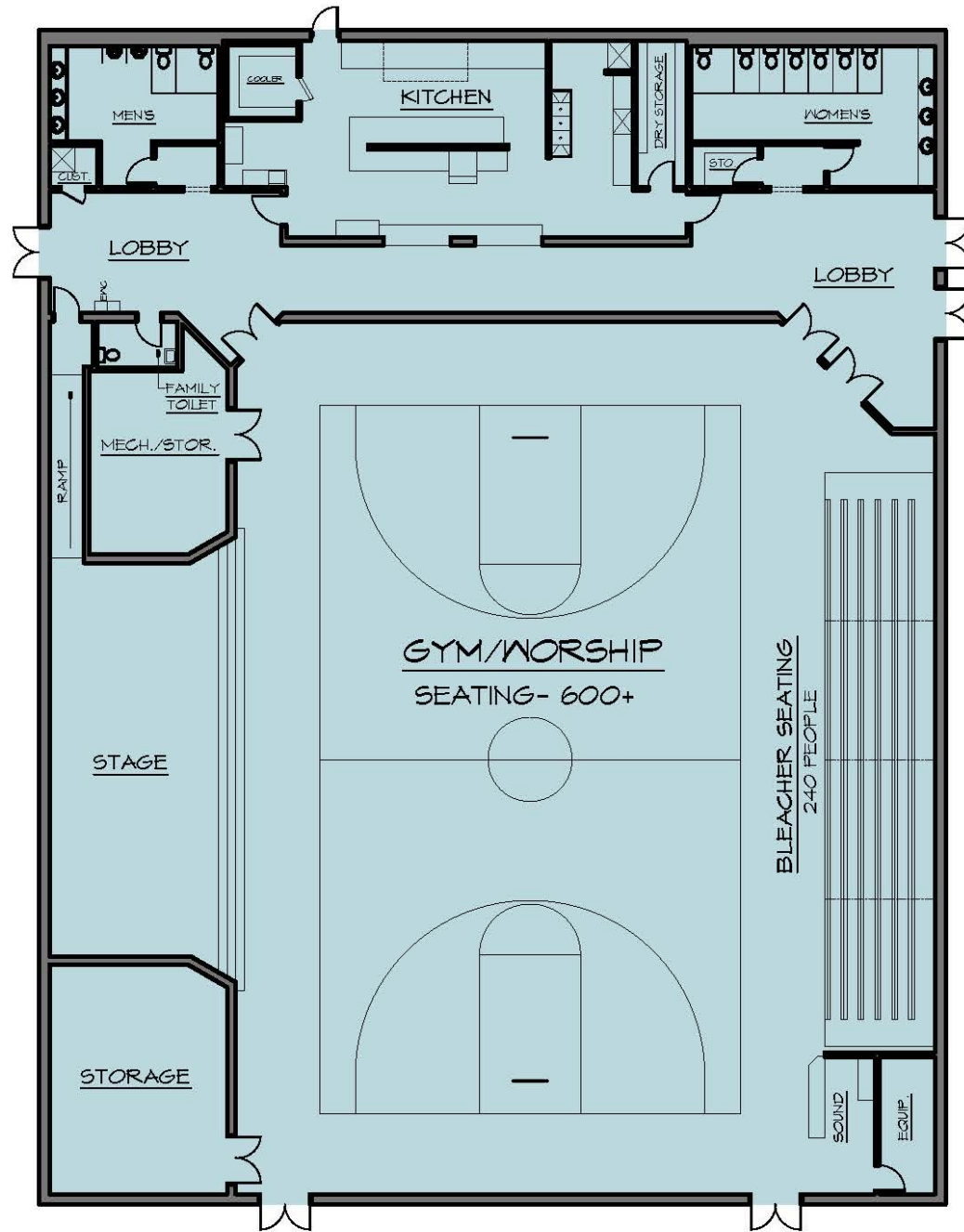
***Kitchen View***

A 3D architectural rendering of a kitchen layout, viewed from an elevated perspective. The kitchen is situated within a long, narrow room. It features a central island with a sink and a stove. To the left of the island is a long counter with a sink and a stove. To the right of the island is another long counter with a sink and a stove. The kitchen is surrounded by a dark brown floor. The walls are light-colored. The rendering is set against a white background with a blue gradient on the left side.

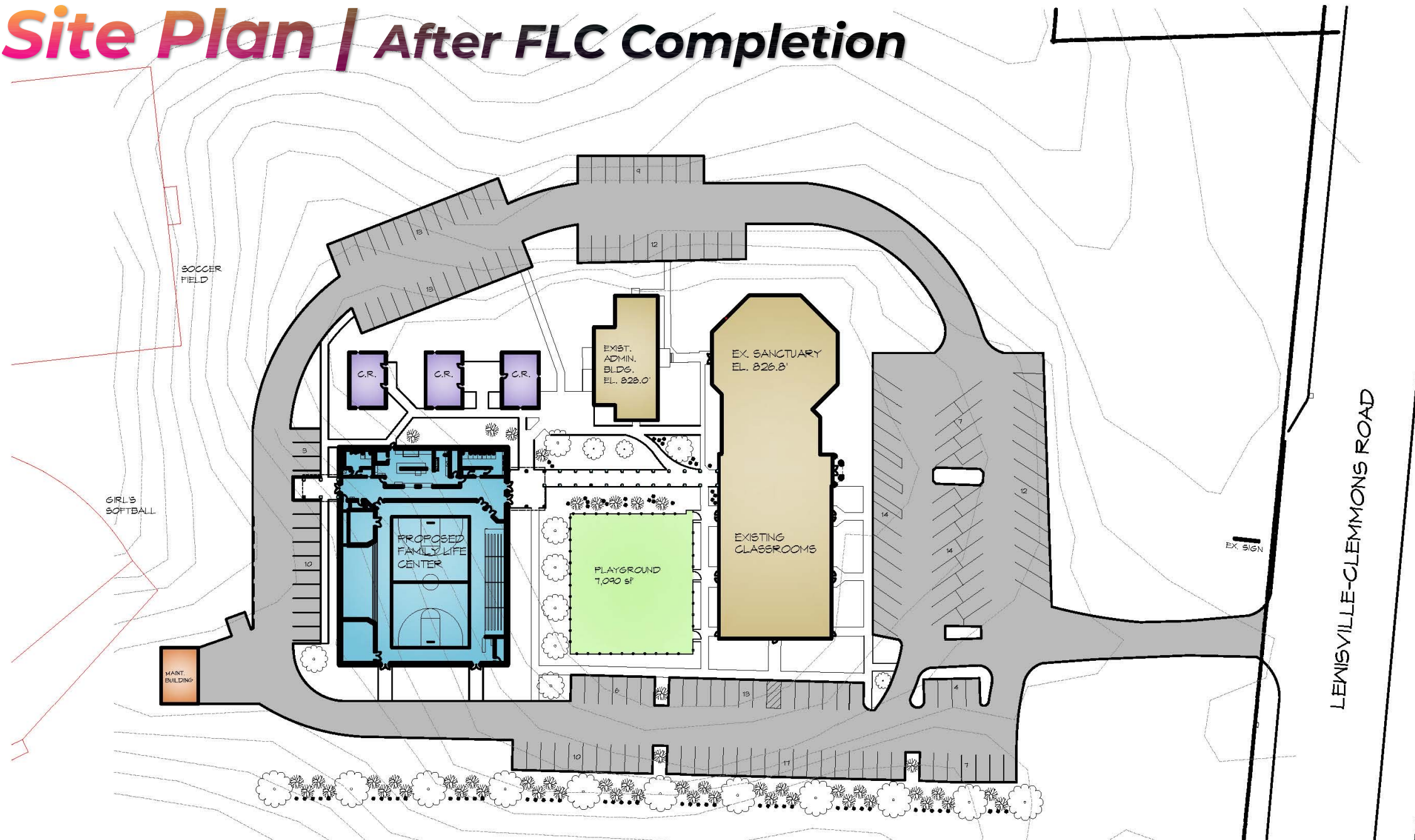
**Kitchen View**

A 3D architectural rendering of a kitchen layout. The scene is viewed from an elevated perspective. In the center, there is a kitchen island with a four-burner cooktop and a sink. To the left of the island is a tall, narrow cabinet. To the right of the island is another tall, narrow cabinet. In the foreground, there is a long, low cabinet with a countertop. To the right of this cabinet is a dark, rectangular object, possibly a refrigerator or a large storage unit. The floor is a light brown color. The walls are a light yellow color. The lighting is soft and even.

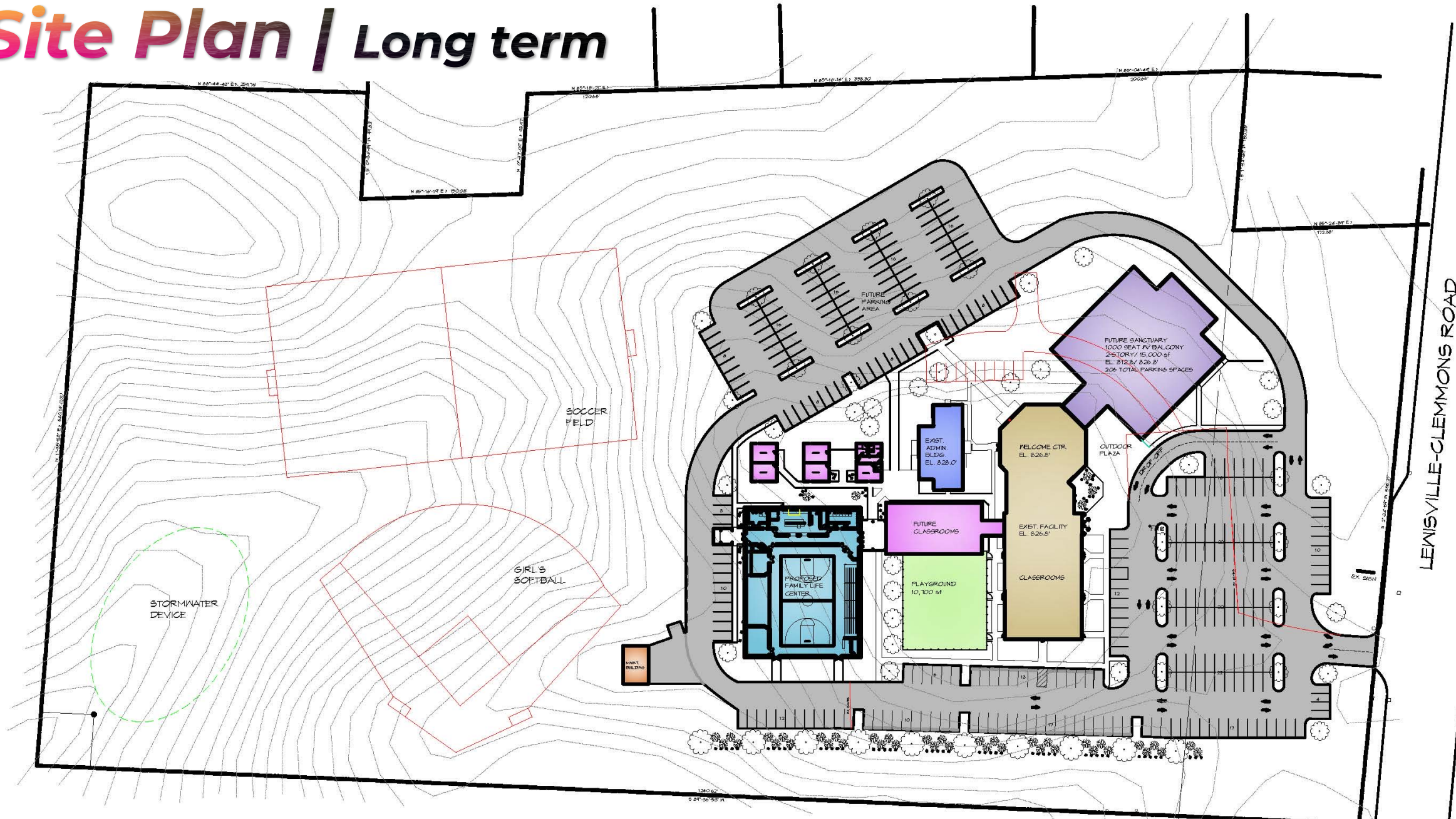
***Kitchen View***



# Site Plan | After FLC Completion



# Site Plan | Long term



*What is the  
estimated cost?*

*\$4 Million*



*How much has been  
given already?*

**\$194,543.76**

*How much has been pledged?*

**\$222,877**

*How much do we  
need to raise?*

*\$3.5 million*



***Submit your  
Questions online  
[friendsbaptist.church/lunch](https://www.friendsbaptist.church/lunch)***